

My trip to ECHO

2ND GRADE + UP
EDITION



When you take a trip to **ECHO**,

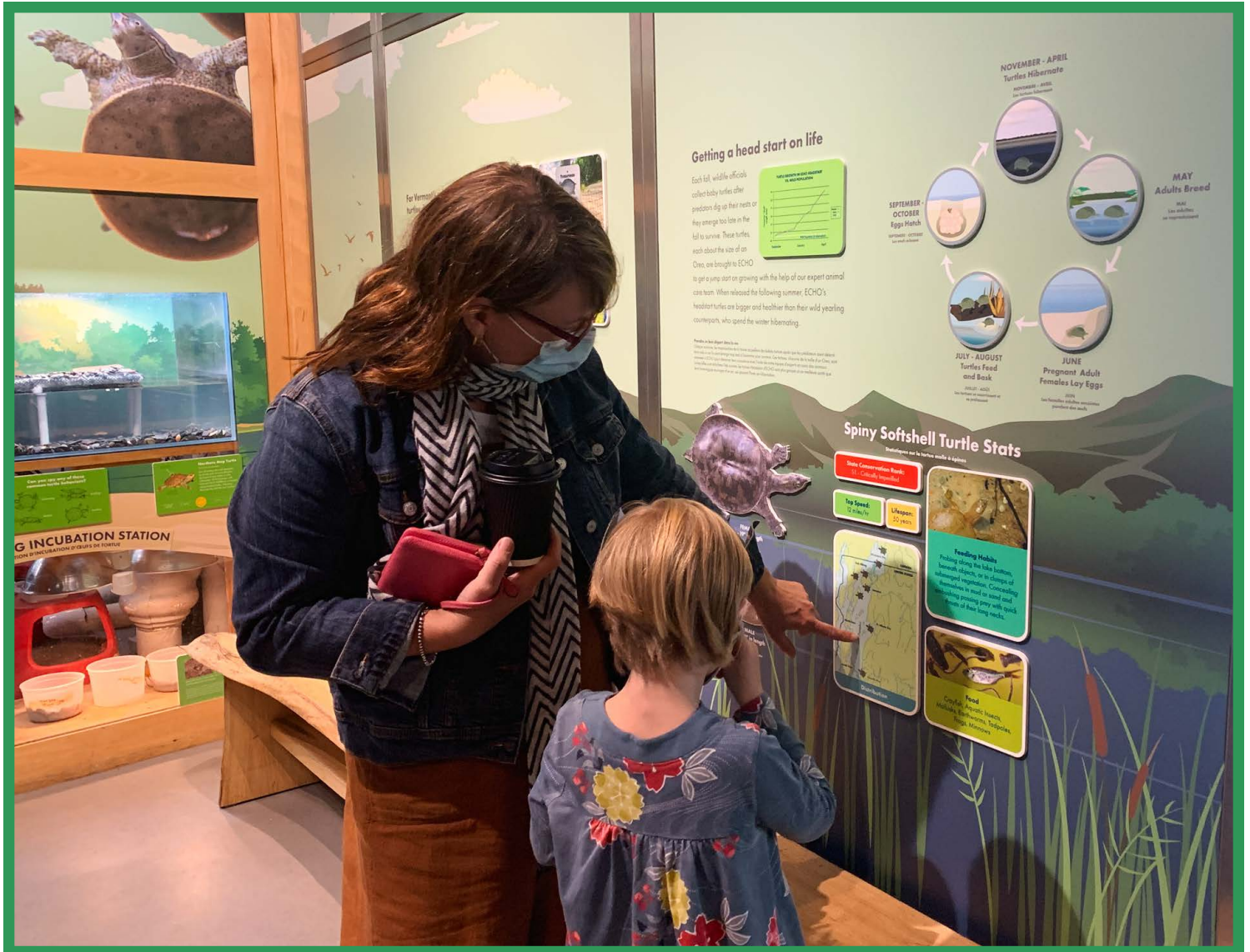


you might travel by foot, or car, or bus.



ECHO is a **museum**.

A museum is a place where people go to learn and play with friends and family.



In some museums you learn about **art**.
In other museums you learn about things that **happened long ago**.

When you take a trip to ECHO, you will ask
science questions and...



... learn about the **animals** that live in and around the lake.





If you take a trip to ECHO, you will walk right in the **door**.



You will be greeted by an ECHO friend in a bright blue apron at the front desk.



There is so much to see and do at **ECHO**.



What do you see?



Stand inside a **fog tornado** and feel
the **mist** around you.



Squish and pat down the rubber sand to make your own landscape.



Sit in the **pulley chair** and use a **rope** to pull yourself up.



What path will you make for the balls to follow?



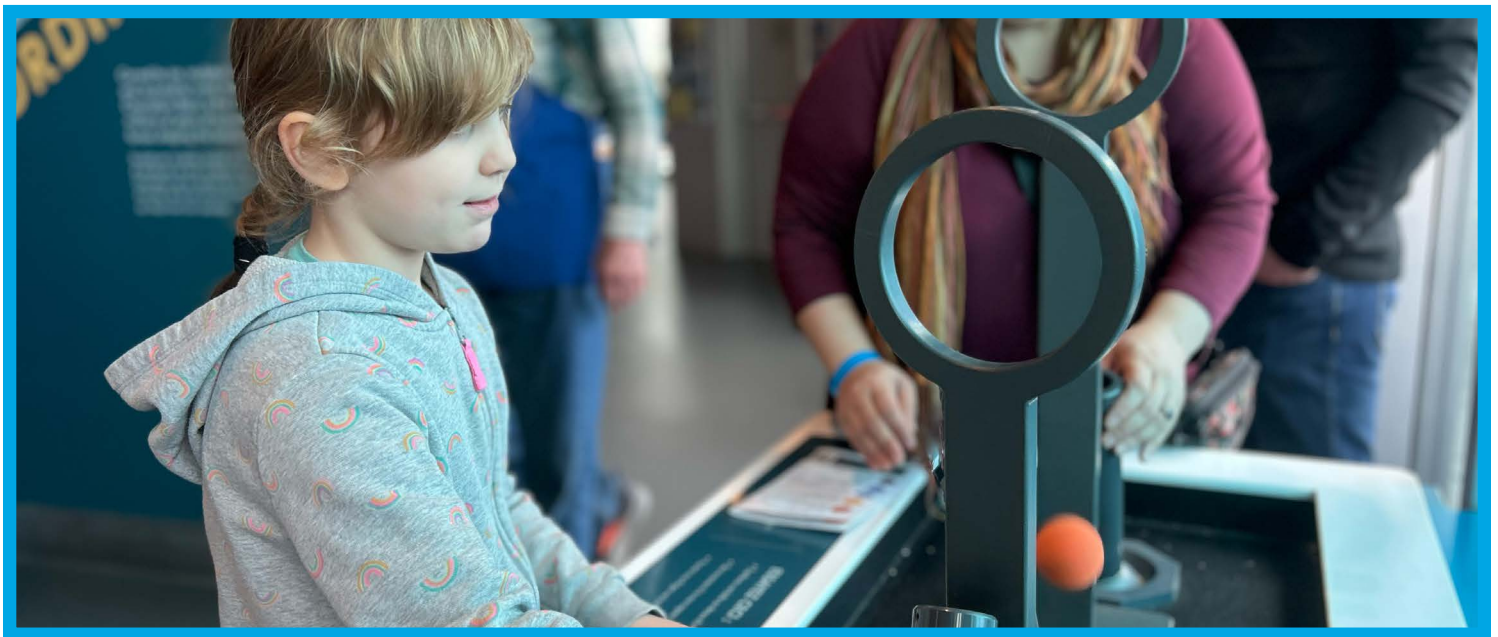
Visit Engineer It and...



solve an **engineering** problem with the ECHO staff.



You can try to balance a **wheel** and float orange balls.



Check out the **animals** like turtles, frogs, and eel!



If you take a trip to ECHO, you will want to **come back** again and again!



MAP



EXHIBIT UPDATE

This exhibit is closed for now but will be open later with new updates!



FLOOR 1



FLOOR 2



Address: 1 College Street, Burlington, VT 05401

Email: info@echovermont.org

Phone: 1.802.864.1848

Hours: 10 am-5 pm

Website: www.echovt.org