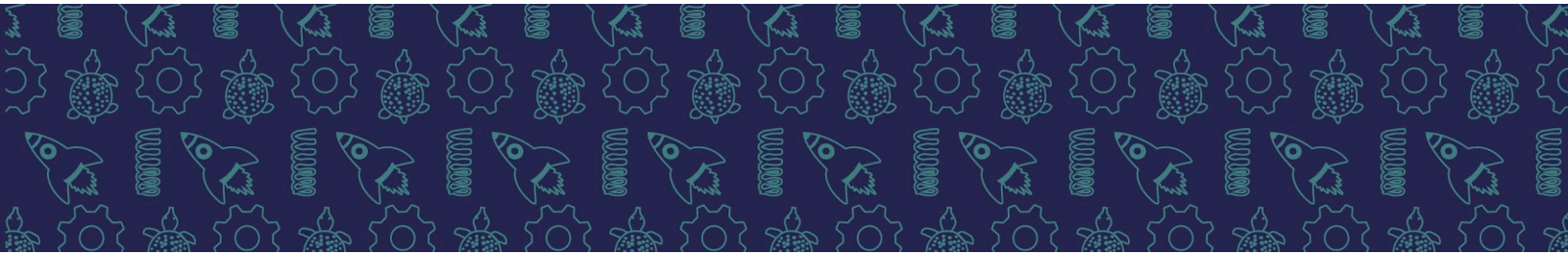




ECHO CAMPS

Family Handbook Vacation Camps 2024-2025

Daily Schedule	3
Stay Home if You Are Sick	4
Morning Drop off	5
Afternoon Pick Up	5
What to Bring to Camp	5
Healthy Hand Hygiene	6
First Aid	6
Cancellation and Refund Policy	6
Behavior Pathways	7



Contacting Camp Staff

The **best way to reach us is via email** at camps@echovermont.org.

Emergency Contact/Lead Staff Cell Phone: (802) 343-7113

Only for use during the camp day by guardians of enrolled campers



Daily Schedule

8:30-9:30	Drop off & Free Choice
9:30-10:00	Morning Meeting & Snack
10:00-11:00	Activity 1
11:00-12:00	Outdoor Exploration & Play
12:00-12:45	Lunch and Free Choice
12:45-1:30	ECHO Explore
1:30-2:30	Activity 2
2:30-3:00	Afternoon Snack
3:00-3:30	Wrap-Up and Pickup

**Schedule may vary. Outdoor activities are weather-dependent. Indoor activities may include live animal demonstrations, science experiments, engineering design challenges, or group games.*



Stay Home if You Are Sick

COVID 19

If your child tests positive for COVID, we ask that you notify camp staff and keep your child home for the period recommended by Vermont Department of Health guidance. Your child may return to camp so long as their symptoms are improving and they have been fever-free for at least 24 hours without medication. We will inform all families of an exposure in camp, and ask that you test your child if they develop new or unusual cold or flu-like symptoms.

Do not send your child to camp with any of the following illnesses. Children who have been out with the following should return to camp using the guidelines below:

- Conjunctivitis: properly dated medication has been administered for 25 hours
- Chicken Pox: when the last sore is scabbed over and there is no oozing
- Head Lice: after prescription treatment and all eggs are removed
- Vomiting: 24 hours after stopped, able to tolerate food
- Impetigo: 48 hours after medication has begun
- Measles: 5 days after swelling starts and a note from a physician
- Scabies: 24 hours after treatment has begun
- Strep throat: 24 hours after medication has begun (4 doses)
- Fever (100.4 or greater): fever-free for 24 hours without medication

If your child is sick and you would like assistance deciding whether to send them to camp, please email camps@echovermont.org.



Morning Drop off

Drop off is from 8:30-9:00 at the rear doors of ECHO, on the west side of the building facing the lake. A staff person will be set up at a table to greet and orient your child.

Afternoon Pick Up

Pick-up is from 3:00-3:30pm in Hoehl Park, beside ECHO's parking lot. Children will be invited to play as they wait. Families do not need to pay for parking when picking up or dropping off. Campers must be signed out by their caregiver/authorized person picking them up. Pickup time is from 3 to 3:30. Staff must return inside at 3:30 for clean-up: any late pickups will need to come inside to the Community Room. In the event of inclement weather, pick-up will be at the rear doors (same as drop-off).

What to Bring to Camp

Each camper will need a backpack or bag containing:

- Refillable water bottle
- Nut-free* snacks (2) and lunch
- Appropriate outdoor gear (snow pants, rain coat, etc)
- Any medications (if needed)

If you anticipate that your child will need a comfort object or other coping tool - maybe a favorite book or stuffed animal- please send that along as well. **ECHO staff are not responsible for any lost items.** Please leave toys and electronics at home - they may get damaged or mixed in with ECHO's camp supplies, which will make them difficult to retrieve.



Healthy Hand Hygiene

All children will engage in hand hygiene at the following times:

- Before and after eating or handling food
- After using the toilet
- After coming in contact with bodily fluid
- After playing outdoors
- After playing with sand and sensory play
- After handling garbage
- After cleaning

First Aid

ECHO Camp staff are trained in pediatric First Aid and CPR. Staff will administer First Aid as needed and will write an incident report for any injuries requiring care. If a child is in need of emergency medical care, we will attempt to contact a parent/guardian in order to give you the opportunity to take your child to a physician. If we cannot contact a parent/guardian or any of their emergency contacts, or your child needs immediate attention, we will call 911.

Cancellation and Refund Policy

If plans change and you need to cancel camp **for any** reason, you are eligible for a full refund until **4 weeks before the first day** of your vacation camp week. Cancellations made within 4 weeks of the start of camp are not eligible for a refund or credit.

If, for any reason, ECHO is unable to run camps, a full refund will be issued to all registrants.

All payment is due at the time of registration. If your family needs financial assistance to attend ECHO camps, please visit our website at echovermont.org/camps to learn more about our scholarship program.



Behavioral Pathways

We believe that children succeed best in a supportive, predictable environment. ECHO seeks to foster this environment in the following ways:

- By articulating clear and reasonable expectations
- By modeling positive behavior
- By reinforcing expected behaviors
- By redirecting misbehavior
- By listening to children and supporting them in solving their own problems
- By presenting choices
- By enforcing logical consequences
- By employing therapeutic breaks

Dismissal from Camp: If a camper is consistently behaving inappropriately, staff will communicate with guardians to make an action plan to address the behaviors. In order to maintain a safe environment for all campers, certain behaviors cannot be tolerated and will result in immediate dismissal from camp. These include but are not limited to bullying or harassment, violence, threats of harm to self or others, elopement (i.e. bolting or wandering), and repeated disruptive behaviors.

ECHO Camp staff members are mandatory reporters and will make reports to Child Protective Services in any cases of suspected child abuse and/or neglect. If families suspect ECHO of child abuse and/or neglect, they should report their suspicions to the Family Services Division of the Department for Children and Families at 1.800.649.5285.

Inclusion Policy: We seek to meet the needs of all of our campers, regardless of race, ethnicity, gender, or ability. It is important to note that at camp, ECHO's gendered bathrooms are the default location for bathroom breaks. Every child is welcome to choose the bathroom that best suits their gender identity or comfort. Please contact us if your child would benefit from regular access to a gender-neutral bathroom.

We recognize that you are the expert on your child. Please reach out to us at camps@echovermont.org to let us know how we can best support your child.